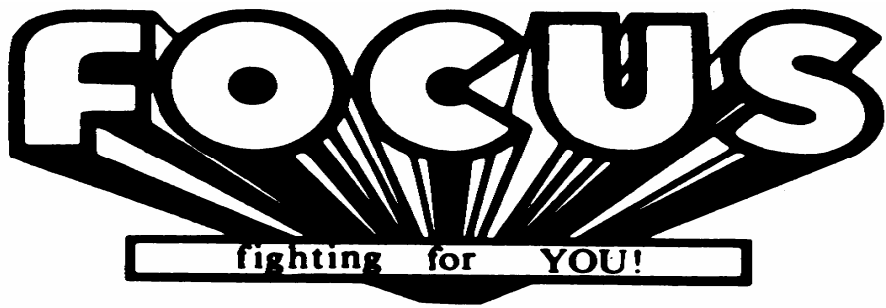


Dundee Central & East



LIBERAL DEMOCRATS

Serving Baxter Park, Maryfield, Stobswell, Woodside & the City Centre

from Claire Matthew

and the local Liberal Democrats

November 2006

Edition Number 52

Welcome to FOCUS!

For the past five and a half years, the Liberal Democrats have produced a regular newsletter called "FOCUS" for residents in the City Centre area currently served by LibDem Councillor Fraser Macpherson. It's also been delivered in the past to parts of the Stobswell and Woodside areas and helps keep residents in touch with local news and gives you the opportunity to raise local concerns.

Due to council ward boundary changes, we are extending the delivery of FOCUS to include your street, so if you have not received FOCUS before - welcome! Editor of the newly expanded FOCUS is Claire Matthew, who lives locally in Eden Street. If there's an issue concerning you, please e-mail Claire at claire.matthew@dundeelibdems.org.uk, or send back the "Grumble Sheet" on the back of FOCUS - it won't even cost you a stamp!



Graffiti on utilities' boxes

Dundee's Liberal Democrat councillors have been highlighting residents' concerns about the amount of graffiti on utilities' boxes across Dundee. Murray has pointed out that our own area suffers from the same problem.



The picture (above) shows graffiti on a box in Haywood Place in the Woodside area and the one below shows a similar problem in Arbroath Road, near to the junction with Morgan Street. The FOCUS Team has reported these to the City Council's Waste Management Department.



Claire says, "Councils can now tell utility box owners to get graffiti removed and if they fail to do so, the

Council can take action itself."

The good news is that the Council has found the majority of owners of boxes have responded positively, although discussions are continuing with others.



Claire Matthew & the LibDems work hard for our local area!

Printed by Urban Print, 57 Perth Road, Dundee, DD1 4HY. Published and promoted by and on behalf of Claire Matthew by Dr Janet Macpherson, 2a Argyle Street, Dundee, DD4 7AL



Pavements Concern

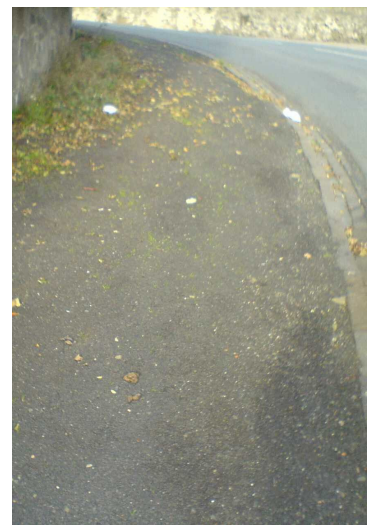


A number of residents have contacted Claire about the state of some pavements locally. One particular example is in Castle Terrace - see the picture of the footpath - right. The footway is in very poor condition but hasn't been

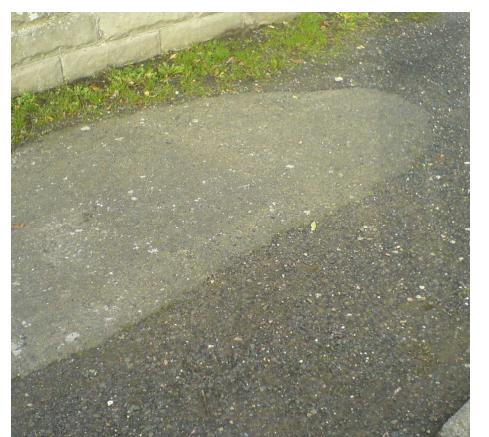
adopted by the local authority yet.

The FOCUS Team has taken up this particular example with Dundee City Council to see what the Council can do.

The FOCUS Team has also contacted the council about similar concerns about pavements in Dalkeith Road (where not only is the



footpath unadopted and in poor condition but there is a sharp gradient - see above right) and also in Nesbitt Street (see right).



If you have a particular issue about pavements locally, please let Claire know and she will do all she can to help.